



GMT MONTHLY MEMBERSHIP PROGRESS REPORT

Results as of: 9/30/2018

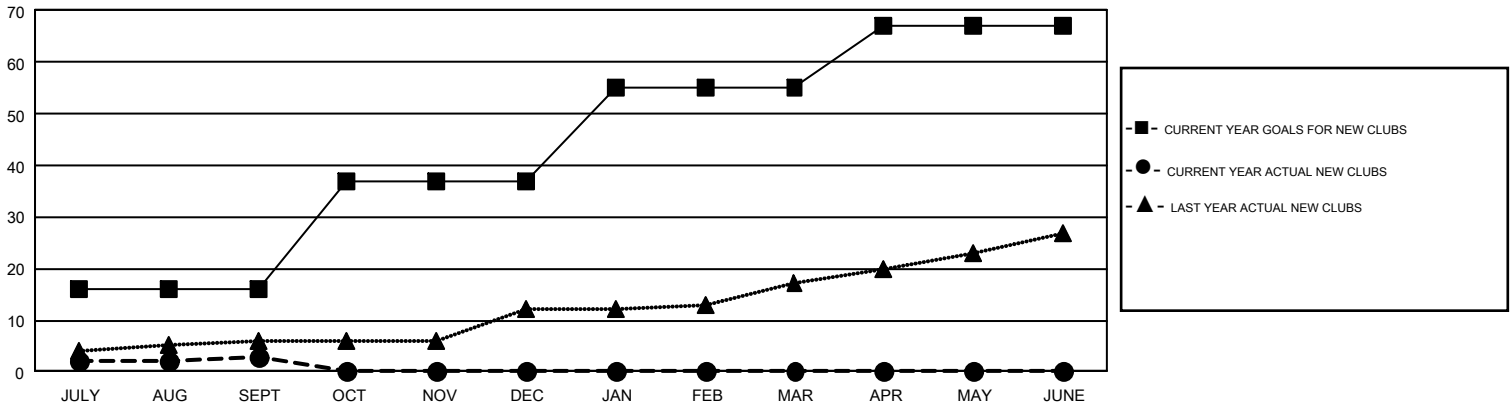
GMT Constitutional Area 1, Group H

GMT: HOWARD HUDSON

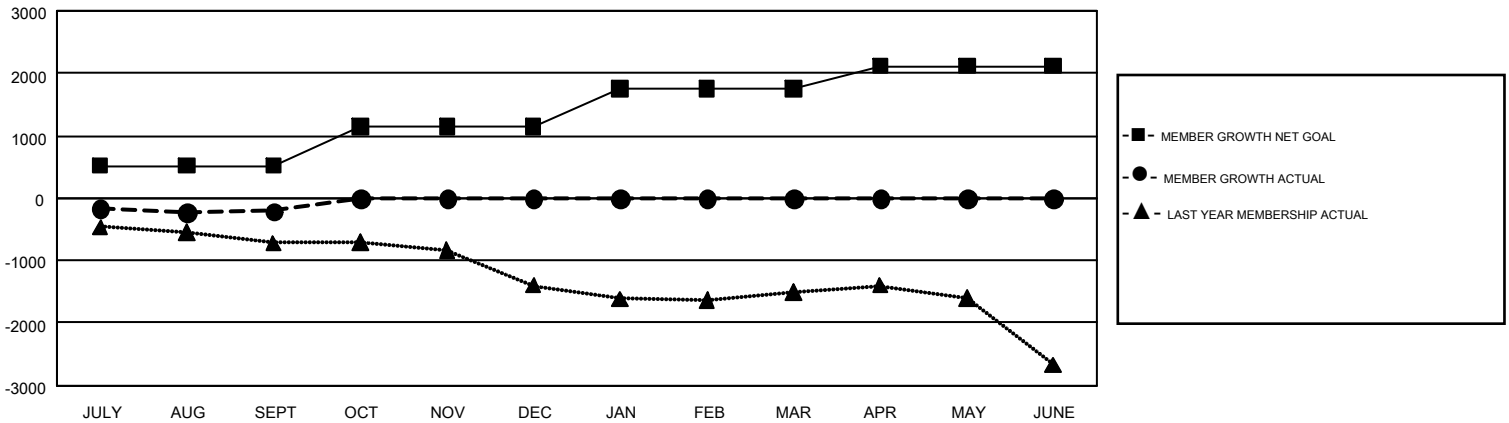
REPORT DOES NOT INCLUDE CLUBS IN UNDISTRICTED AREAS.

Clubs				Members			
RESULTS FOR 2018-2019				RESULTS FOR 2018-2019			
QUARTER	NEW CLUB GOAL	NEW CLUBS	DROPPED CLUBS	QUARTER	MEMBER GROWTH NET GOAL	MEMBER GROWTH ACTUAL	DROPPED MEMBERS ACTUAL (including transfers)
JULY/AUG/SEPT	16	3	12	JULY/AUG/SEPT	521	1,249	1,256
OCT/NOV/DEC	21	0	0	OCT/NOV/DEC	622	0	0
JAN/FEB/MAR	18	0	0	JAN/FEB/MAR	608	0	0
APR/MAY/JUNE	12	0	0	APR/MAY/JUNE	365	0	0

GOALS AND ACTUAL NEW CLUBS CUMULATIVE



GOALS AND ACTUAL MEMBERS CUMULATIVE



DROPPED CLUBS: 12	428 CLUBS OF 1,392 ADDED 1 OR MORE NEW MEMBERS	GENDER DISTRIBUTION MALE 23,155 (62.14%) FEMALE 14,110 (37.86%)
DROPPED MEMBERS DECEASED 125 CLUB CANCELLED 22 OTHER 1,106 <hr/> TOTAL 1,253	CLICK HERE FOR CUMULATIVE MEMBERSHIP DATA	TOTAL FAMILY UNIT MEMBERS 7,679 FAMILY MEMBERS PAYING HALF DUES 3,978